

MANDATORY

TRAILER TPMS/TPRS

FROM JULY 2024



The UN ECE R 141 prescribes, among other things:
If a tyre pressure loss of 20% or a malfunction occurs,
the driver must receive a warning in the cab within ten minutes.



UN ECE R 141 legal requirements for new vehicles

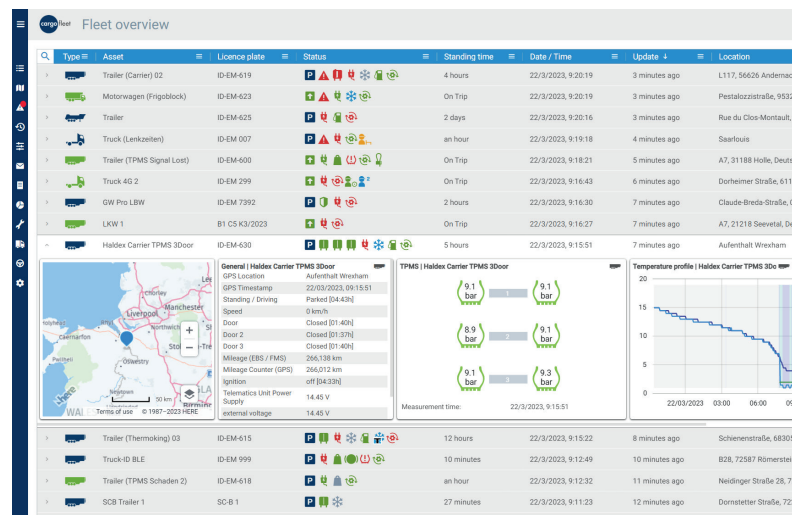
- Deviations in tyre pressure of >20% must be displayed in the truck within 10 minutes
- Standardized EBS interface for TPMS/TPRS data - also from third-party suppliers
- UN ECE R 141 compliant TC Trailer Gateway BASIC telematics box (control unit incl. TPMS)
 - complies with UN ECE R 141 without additional service fees/costs
 - additional telematics benefit for vehicle manufacturers and/or end customer can be activated without problems
- One system for all EBS modulators - only one sensor type required
- EBS manufacturer-independent installation and configuration
- Proof of UN ECE R 141 conformity (sensors + control unit) by idem
- Support by idem in the installation process and documentation in vehicle production



Only possible with idem telematics: even without using a telematics portal, forwarding of the warning message to an e-mail box is possible.

Additional benefits from Telematics functions

- More detailed TPMS information (also available online in the portal and via app): Tyre pressure and temperature, evaluations, alarms
- Fuel savings through optimal tyre pressure
- Warning concept for tyre pressure and temperature
- Alarms in case of deviations (via mail and SMS)
- Proactive action option (Tyre pressures with fixed-time messages even in parked condition)
- Integration of TPMS information into digital maintenance calendar
- Diagnostic option via service app or TCC workshop tool
- Forwarding of TPMS data to tyre manufacturer/tire service provider possible



Our telematics unit for monitoring trailers and semi-trailers.

TC Trailer Gateway BASIC



- ✓ Track & Trace
- ✓ Satellite Positioning
- ✓ Geofence
- ✓ Tour-/Route-Monitoring
- ✓ Stock Management
- ✓ Maintenance and Diagnostics
- ✓ Service Data
- ✓ Battery Heater
- ✓ EBS Data
- ✓ Tyre Monitoring
- ✓ Break Pad Wear (EBS)
- ✓ EBPMs
- ✓ Data Transfer via BLE
- ✓ Truck & Trailer Coupling
- ✓ Service App
- ✓ Alarming
- ✓ Reports